

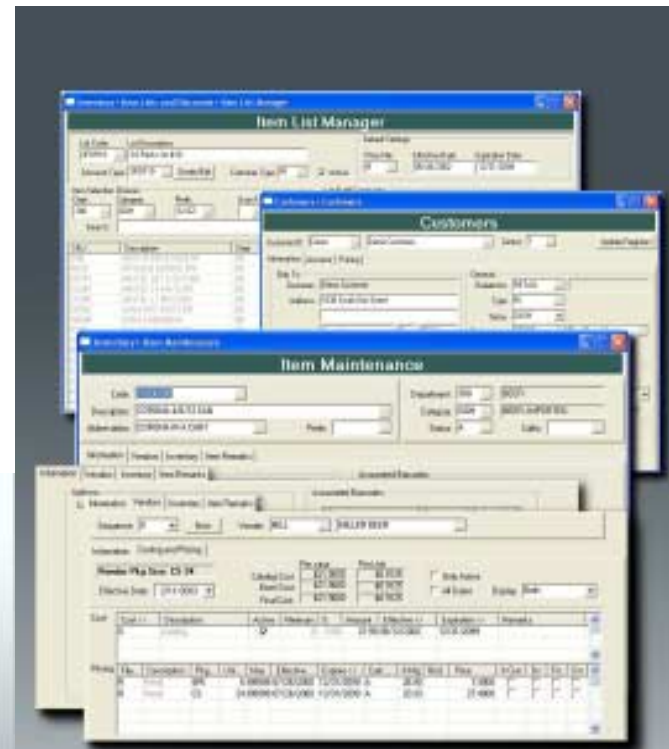
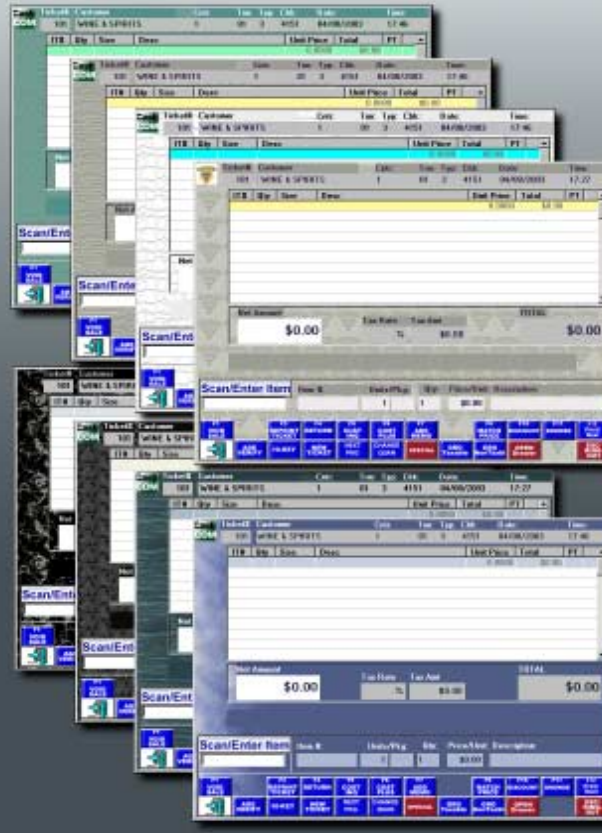
# Visual CashCom Features

- Comprehensive Point of sale system
- Tailored for Texas wholesale processing
- Multi-Store pricing capability
- Multilevel, chain-aware discounting
- Includes order entry and invoicing
- Multiple open ticket sales transactions
- Integrated credit / debit card processing
- 6 second credit approvals
- Positive and negative check verification
- Alcohol / tobacco age verification
- Complete store employee time tracking
- Touch screen capable
- Centralized perpetual inventory system
- Catalog costs and multiple vendor discount levels
- Reports credit due from vendors
- Inventory history by transaction type
- Internet aware polling and updates
- Optional report writer using *Seagate Crystal Reports*®
- Supports local and wide area networks
- Quick item lookup methods by description, key word, department, category, barcode or SKU



## The many faces of CashCom Register

- Designed to be fully customized to fit your retail style and needs.
- User defined screen buttons and keyboard key functions.
- Intuitive and simple. Set up just the way you want it.
- "Quick Select" tender keys to make check out fast.
- Integrated Credit Card Transactions using *Protobase*®.
- Employee clock functions and sales tracking.
- The registers are compatible with the major POS hardware peripherals available from Star, Epson, WelchAllyn, Symbol, MMF, HHP, IDTech, Cherry and more.
- The versatility of the register allows you to handle counter sales, wholesale orders and call-in orders placed on hold until the customer arrives to check out. Open orders can also be used with Credit Card pre-approval and tip tracking for full service restaurant style orders.



## The versatility of CashCom Office

- Each Item SKU supports multiple package sizes.
- Maintain multiple pricing structures for each item allowing you to set up special customer prices, wholesale price, special sale prices and varied chain store prices.
- Pricing and costs are time sensitive, only active during the date range you specify.
- History of prices and costs are automatically kept so you can quickly compare current pricing and costs to the pricing and costs you had a month ago, six months ago or even a year ago.
- Comprehensive customer management tools. Maintain wholesale customers, "in-store" charge customers, in-store check verification, customer transaction history, billing and statements.
- Complete Inventory Control with purchasing, ordering, invoicing, perpetual inventory controls, and vendor / salesperson management.

# The Power of CashCom Reporting

CashCom Reports allow you to closely monitor every aspect of your business - inventory, sales, items sold, employee sales and performance. Maintain a competitive edge with critical information available when you need it.

- All reports created using *Crystal Reports*® and can be modified to meet your needs.
- Each report type can be viewed or printed using many selection combinations.
- Use the *Crystal Reports*® export feature to save your report to disk, send as an email, save as a *Microsoft Excel*®, *Microsoft Word*®, or even save as an HTML document to be viewed on the Web.



## System Requirements for Visual CashCom

### Minimum Requirements:

- Register -**
- ◆ Processor: Intel Pentium III: 450Mhz
  - ◆ Memory: 64MB of RAM
  - ◆ Operating System: Windows 98SE
  - ◆ Display: 640 x 480 Resolution; 8-bit Color

### CashCom Office -

- ◆ Processor: Intel Pentium III: 1Ghz
- ◆ Memory: 128MB of RAM
- ◆ Operating System: Windows 2000
- ◆ Display: 800 x 600 Resolution; 8-bit Color

### Recommended Configuration:

- Register -**
- ◆ Processor: Intel Pentium III: 1Ghz
  - ◆ Memory: 128MB of RAM
  - ◆ Operating System: Windows 2000 / XP Pro
  - ◆ Display: 640 x 480 Resolution; 16-bit Color

### CashCom Office -

- ◆ Processor: Intel Pentium III: 1.8Ghz
- ◆ Memory: 256MB of RAM
- ◆ Operating System: Windows 2000 / XP Pro
- ◆ Display: 1024x 768 Resolution; 32-bit Color

Software developed by:  
**CashCom Company**

PO Box 810052  
Dallas, Tx 75381-0052  
Email: [sales@cashcom.com](mailto:sales@cashcom.com)  
Local: 469-621-0585  
Fax: 972-484-2263

For more information  
call us toll free at  
**800-621-0585**

... or  
visit us on the Web at  
<http://www.cashcom.com>

*Please do not confuse us with the generic and average off-the-shelf product sold through the internet under a similar name.*

**We are CASHCOM!**



*An affordable and comprehensive retail management system designed specifically for package store retailers.*

Windows based POS and inventory management system.

Handles Counter Sales, Call-in Sales, Wholesale Orders and Restaurant or Deli Tickets.

Items can be setup to support multiple package sizes.

Integrates with credit card processing using *ProtoBase*®

